

PROPRIETARY AND CONFIDENTIAL

THE INFORMATION CONTAINED IN THIS DRAWING IS THE SOLE PROPERTY OF DYTRAN INSTRUMENTS INC. ANY REPRODUCTION IN PART OR AS A WHOLE WITHOUT THE WRITTEN PERMISSION OF DYTRAN INSTRUMENTS INC. IS PROHIBITED

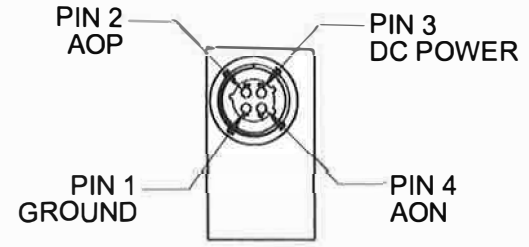
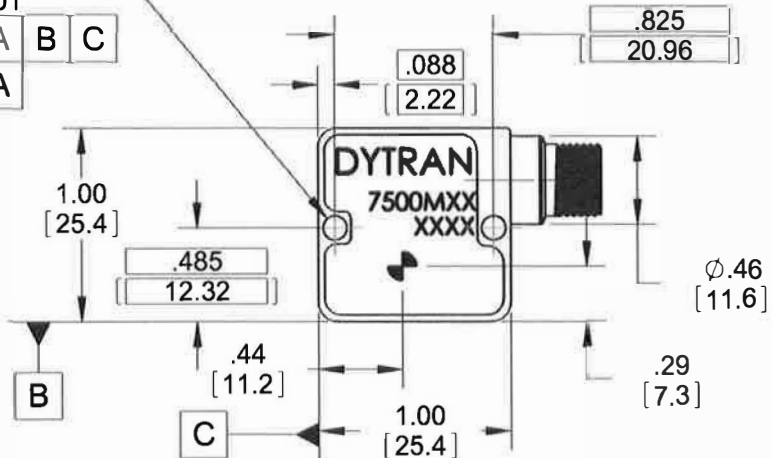
修订版

REV	ECN	描述	BY/DATE	CHK	APPR
D	9192	ADDED GDT	AB 09/18/12	EP	DV
E	10755	REVISED TO REFLECT UPDATED HOUSING	JS 01/30/14	RA	DV
F	11049	SEE ECN	EC 06/06/14	J S	



2X R.063^{+0.010}/_{-.001} THRU

Ø .020 (M)	A	B	C
Ø .006 (M)	A		



型号	灵敏度
7500M10	40 mV/g
7500M11	5 mV/g

5. MOUNT TORQUE: 5-8 LB-IN

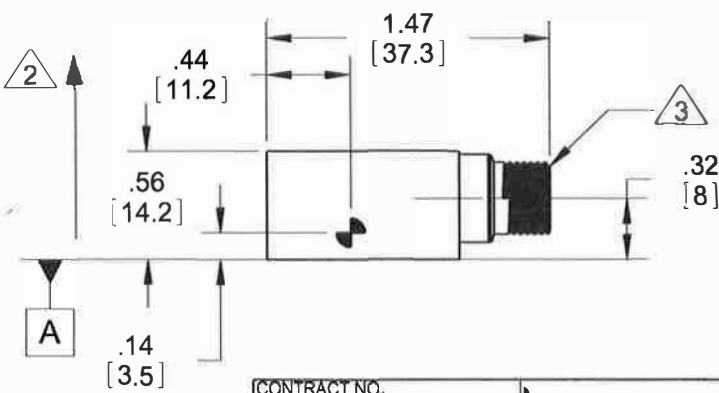
4 DELETED

3 配有GLENAIR插头的800-006-06Z16-4SX

2 正加速度输出的箭头指示

1. 重量: 较大45克

注意: 除非另有说明



CONTRACT NO.



TITLE:

OUTLINE/INSTALLATION, ACCELEROMETER, 7500M10, M11

APPROVALS		DATE
ORIG	DV	09/07/10
CHK	DV	10/27/10
APP	SA	10/29/10
APP		6/18/13

SIZE	CAGE CODE	DWG. NO.	REV
A	2W033	127-7500M10	F
SCALE: NONE		SOLIDWORKS	SHEET 1 OF 1

UNLESS OTHERWISE SPECIFIED:
 DIMENSIONS ARE IN INCHES.
 DIMENSIONS IN BRACKETS [] ARE IN MILLIMETERS
 TOLERANCES ARE:
 INCHES METRIC ANGLES
 .XX ± .03 .X ± 0.8 ± 1°
 .XXX ± 0.10 .XX ± 0.25

MATERIAL

FINISH

DO NOT SCALE DRAWING

UNLESS OTHERWISE SPECIFIED:
 INTERPRET DIM & TOL PER ASME Y14.5M - 1994.
 REMOVE BURRS.
 COUNTERSINK INTERNAL THDS 90° TO MAJOR DIA.
 CHAM EXT THDS 45° TO MINOR DIA.
 THD LENGTHS AND DEPTHS ARE FOR MIN FULL THDS.
 THDS PER MIL-S-7742.
 DIMENSIONS APPLY AFTER FINISHING.

ALL MACHINED SURFACES TOTAL RUNOUT WITHIN .005.
 BREAK SHARP EDGES .005 TO .010.
 MACHINED FILLET RADII .005 TO .015.
 WELDING SYMBOLS PER AWS A2.4.
 ABBREVIATIONS PER MIL-STD-12.

7500M10, M11 USED ON NEXT ASSY APPLICATION

THIRD ANGLE PROJECTION USA



- 可变电容加速度计
- 差异模式
- 非常紧密的密封
- 直流响应

PHYSICAL

Weight, Max
连接器 Type
安装 Thru Holes
材料

ENGLISH		SI	
1.6	oz	45	grams
4-PIN, 3/8-28UN-28		4-PIN, 3/8-28UN-28	
2 X Ø.13		2 X Ø.13	
304L		304L	

性能表现

输入范围
频率响应 (-3 dB), ± 50Hz [1]
灵敏度差分, ± 10% [2] 输出
噪声, 差分, 典型值
非NLLinearity, t MMax [4] [4]
横向灵敏度, 较大值
比例因子校准误差, 较大零测量输出

±50	g	±490	m/s ²
0-300	Hz	0-300	Hz
40	mV/g	4.1	mV/m/s ²
50	µg rms/v Hz	491	µm/s ² /V Hz
0.5	% F.S	0.5	% F.S
2	%	2	%
2	%	2	%
±50	mV	±50	mV

环境的

较大机械冲击
偏置温度漂移, 较大值 [3]
偏置校准误差
工作温度范围
比例因子温度变化 [3] 密封

5000	gpk	49050	m/s ² peak
56	(ppm of span)/°F	100	(ppm of span)/°C
1.5	% of span	1.5	% of span
-67 to +257	°F	-55 to +125	°C
-83 to +83	°F	-150 to +150	°C
Hermetic		Hermetic	

电气的

输出共模电压, TYP输出阻抗, 标称值
工作电压
工作电流 (AOP和AON开路) 电源抑制比

2.45		2.45	
1	Ω	1	Ω
+9 to +32	VDC	+9 to +32	VDC
12 to 14	mA DC	12 to 14	mA DC
>65	dB	>65	dB

This family also includes:

型号	输入范围	频率响应 (Hz)	灵敏度 差分, ±10% (mV/g)	较大冲击 (gpk)	噪声微分 (µg rms/vHz)
7500M11	± 400	0-300	5	5000	400

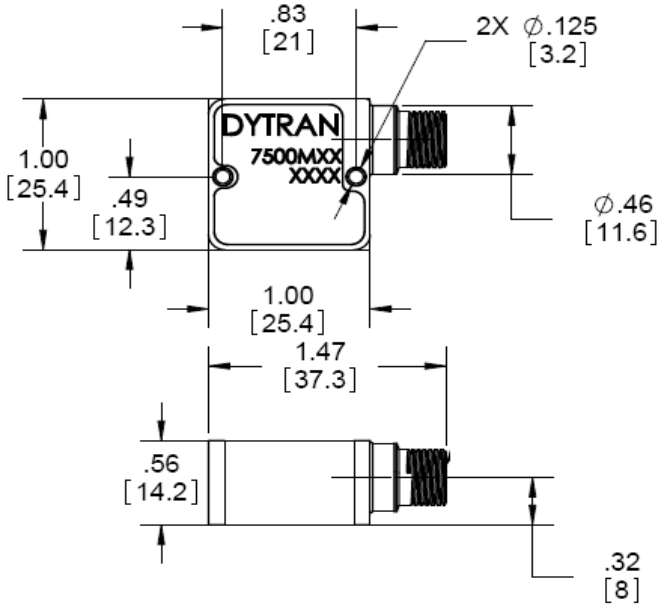
有关详细说明, 请参阅该系列产品的性能规格。

提供的配件:

- 1) 认可的校准证书 (ISO 17025)
- 2) 两个安装螺钉, 型号为6935

提示:

- [1]低通一阶滤波器, 转折频率为300Hz。
- [2]单端灵敏度是所示值的一半。
- [3]在额定温度范围内。
- [4]满量程的-90%至+90%。
- [5]为了不断改进产品, 我们保留更改规格的权利, 恕不另行通知。



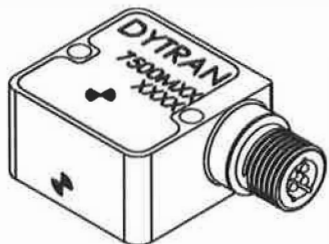
线条图上的单位以英寸为单位, 方括号中的尺寸以毫米为单位。

PROPRIETARY AND CONFIDENTIAL

THE INFORMATION CONTAINED IN THIS DRAWING IS THE SOLE PROPERTY OF DYTRAN INSTRUMENTS INC. ANY REPRODUCTION IN PART OR AS A WHOLE WITHOUT THE WRITTEN PERMISSION OF DYTRAN INSTRUMENTS INC. IS PROHIBITED

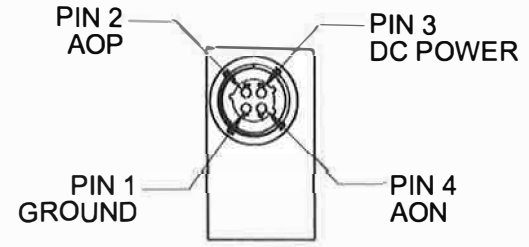
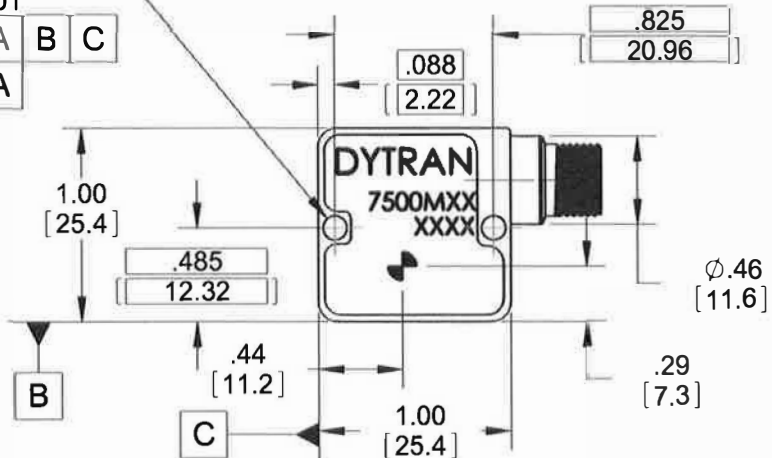
修订版

REV	ECN	描述	BY/DATE	CHK	APPR
D	9192	ADDED GDT	AB 09/18/12	EP	DV
E	10755	REVISED TO REFLECT UPDATED HOUSING	JS 01/30/14	RA	DV
F	11049	SEE ECN	EC 06/06/14	J S	



2X R.063^{+0.010}/_{-.001} THRU

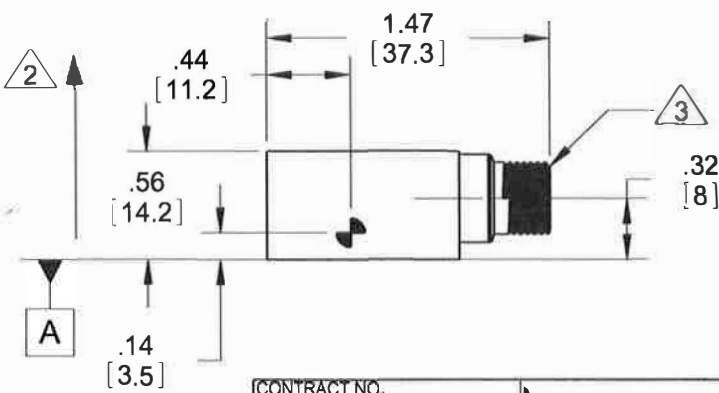
Ø .020 (M)	A	B	C
Ø .006 (M)	A		



型号	灵敏度
7500M10	40 mV/g
7500M11	5 mV/g

5. 安装扭矩: 5-8磅英寸

- 删除
- MATESWITH GLENAIR插头
800-006-06Z16-4SX
- 箭头表示加速度
正输出方向
- 1.重量: 最大45克
- 注意: 除非另有说明



CONTRACT NO.



TITLE:
**OUTLINE/INSTALLATION,
ACCELEROMETER, 7500M10, M11**

UNLESS OTHERWISE SPECIFIED:
INTERPRET DIM & TOL PER
ASME Y14.5M - 1994.
REMOVE BURRS.
COUNTERSINK INTERNAL THDS
90° TO MAJOR DIA.
CHAM EXT THDS 45° TO MINOR DIA.
THD LENGTHS AND DEPTHS ARE FOR
MIN FULL THDS.
THDS PER MIL-S-7742.
DIMENSIONS APPLY AFTER FINISHING.

7500M10, M11
USED ON NEXT ASSY

APPLICATION

THIRD ANGLE PROJECTION
USA

ALL MACHINED SURFACES
TOTAL RUNOUT WITHIN .005.
BREAK SHARP EDGES .005 TO .010.
MACHINED FILLET RADII .005 TO .015.
WELDING SYMBOLS PER AWS A2.4.
ABBREVIATIONS PER MIL-STD-12.

UNLESS OTHERWISE SPECIFIED:
DIMENSIONS ARE IN INCHES.
DIMENSIONS IN BRACKETS []
ARE IN MILLIMETERS
TOLERANCES ARE:

INCHES	METRIC	ANGLES
.XX ± .03	.X ± 0.8	± 1°
.XXX ± .010	.XX ± 0.25	

MATERIAL

FINISH

DO NOT SCALE DRAWING

APPROVALS		DATE
ORIG	DV	09/07/10
CHK	DV	10/27/10
APP	SA	10/29/10
APP		6/18/13

SIZE A	CAGE CODE 2W033	DWG. NO. 127-7500M10	REV F
SCALE: NONE		SOLIDWORKS	SHEET 1 OF 1

型号编号 7500M11	性能规格 可变电容加速度计			DOC NO PS7500M11
				REV C, ECN 7684, 07/11/11



- 可变电容加速度计
- 差分模式
- 非常紧密的密封
- 直流响应

ENGLISH		SI	
较大重量	1.6 oz	45 grams	
连接器	4-PIN, 3/8-28UN-28	4-PIN, 3/8-28UN-28	
封装	2 X Ø.13	2 X Ø.13	
	304L	304L	
PHYSICAL			
类型			
通孔			
PERFORMANCE			
输入范围	±400 g	±4806 m/s ²	
频率响应 (-3dB), ±50Hz [1]	0-300 Hz	0-300 Hz	
灵敏度差异, +10% [2]	5 mV/g	0.5 mV/m/s ²	
输出噪声, 差分, 典型值	400 µg rms/√Hz	3,924 µ m/s ² /√Hz	
非线性, 较大值 [4]	2 % Span	2 % Span	
横向灵敏度, 较大值	2 %	2 %	
比例因子校准误差, 较大值零	2 %	2 %	
测量输出	±50 mV	±50 mV	
环境的			
较大机械冲击	5000 gpk	49050 m/s ² peak	
偏置温度漂移, 较大值 [3]	56 (ppm of span)/°F	100 (ppm of span)/°C	
偏置校准误差	1.5 % of span	1.5 % of span	
工作温度范围	-67 to +257 °F	-55 to +125 °C	
比例因子温度漂移 [3]	-83 to +83 ppm/°F	-150 to +150 ppm/°C	
海豹	Hermetic	Hermetic	
电子电气			
输出共模电压, TYP	2.45 VDC	2.45 VDC	
输出阻抗, 标称值	1 Ω	1 Ω	
工作电压	+9 to +32 VDC	+9 to +32 VDC	
工作电流 (AOP和AON开路)	12 to 14 mA DC	12 to 14 mA DC	
电源抑制比	>65 dB	>65 dB	

This family also includes:

型号	输入范围(g)	频率响应 (Hz)	灵敏度 差分, ±10% (mV/g)	较大冲击 (gpk)	噪声微分 (µg rms/√Hz)
7500M10	± 50	0-300	40	5000	50

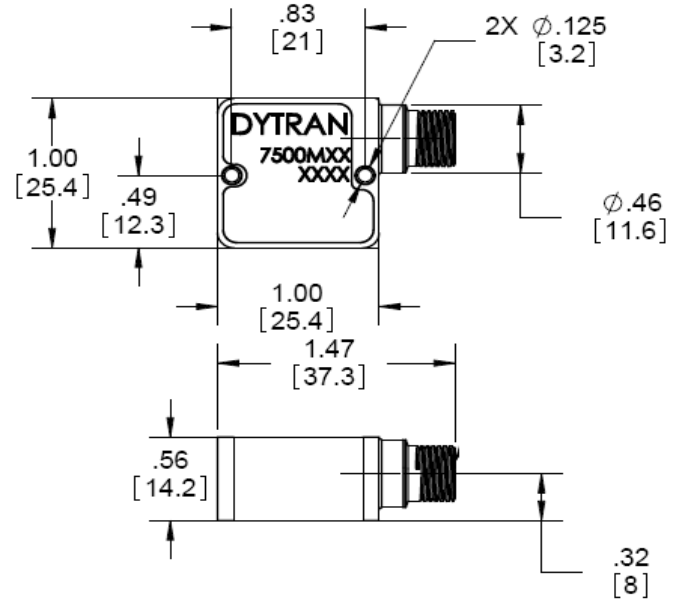
有关详细说明, 请参阅该系列产品的性能规格。

提供的配件:

- 1) 认可的校准证书 (ISO 17025)
- 2) 两个安装螺钉, 型号为6935

提示:

- [1]低通一阶滤波器, 转折频率为300Hz。
- [2]单端灵敏度是所示值的一半。
- [3]在额定温度范围内。
- [4]-满量程的-90%至+90%。
- [5]为了不断改进产品, 我们保留更改规格的权利, 恕不另行通知。



线条图上的单位以英寸为单位, 方括号中的尺寸以毫米为单位。有关更多信息, 请参考127-7500M10。